



Seaway, Southminster CM0 7ND  
£395,000

To view this property call  
01621 734300

**SJ WARREN**  
[www.sjwarren.co.uk](http://www.sjwarren.co.uk)



## The accommodation comprises

---

Located in the riverside village of St Lawrence Bay which well known for its sailing, water sports and lovely coastal walks. This deceptively spacious three bedroom detached house built over 22 years ago by the present vendors.

The property offers a cloakroom/w/c, a large lounge with log burner, spacious kitchen/dining room and study, the first floor has three double bedrooms one with en-suite and a family bathroom. Externally a manageable size south facing rear garden with patio and two attached pitched tiled roof

multiple buildings, to the front a generous drive for multiple vehicles.  
POTENTIAL TO EXTEND FURTHER INTO THE LOFT SPACE, NO ONWARD CHAIN.

### Storm porch

Storm porch with brick and oak pillars.

### Hallway

13'3 x 5'7

Double glazed entrance door to the hallway which has an under stairs storage cupboard, stairs to the first floor, tiled flooring.

### Cloakroom/w/c

Wood effect laminate flooring, corner hand wash basin and a close coupled w/c.

### Lounge

25'2 x 11'9

An excellent size room wood effect laminate flooring, brick built fireplace with a cast iron wood burner, two radiators and television point. Double glazed double doors to the rear and a double glazed window to the front.

### Kitchen/dining room

16'1 x 15'2

An excellent size room with a good range of white eye level units with wood back panelling, matching base units and drawers with quartz work tops over. Integral dish washer, built in wine rack, inset butler style sink, range style cooker with eight gas burners and double electric ovens below, space for fridge/freezer and plumbing for washing machine. Matching dining island with cupboards and drawers below, tiled flooring, radiator and a double glazed window to the rear, double glazed window and door to the side and a floor mounted oil boiler(not tested) and down lighting.

### Study

9'2 x 8

A good size room with wood effect laminate flooring, radiator and a double glazed window to the front.

### Landing

8'1 x 11'2

Loft access.

### Bedroom en-suite

11'8 x 13'9

All the bedrooms are doubles and this is a nice bright airy room, radiator and a double glazed dormer style window to the front. Door to the en-suite.

En-suite comprising of a walk in shower cubicle, pedestal hand wash basin, close coupled w/c, tiled flooring and radiator.

### Bedroom two

11'9 x 9

A good double room with a recess/cupboard space over the stairs, radiator and a double glazed window to the front.(Pat reduced head height into the dormer)

### Bedroom three

8'4 x 9'6

The final room again a double, double glazed window to the side and radiator.

### Bathroom

Inset sunken corner style bath, walk in shower cubicle, pedestal hand wash basin, close coupled w/c. Tiled flooring and part tiled walls, down lighting, chrome heated towel rail and a double glazed window to the rear.

### Rear garden south facing

A nice size south facing garden to enjoy the summer sun, commencing with a part raised sun terrace and patio to the side. Water tap and a neatly laid lawn, close board fencing and two attached outbuildings with pitched tiled roof, Side gate giving access to the front.

### Frontage/driveway

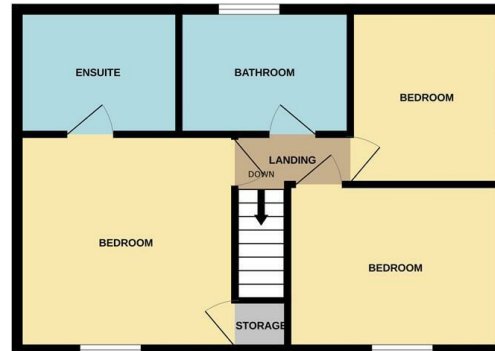
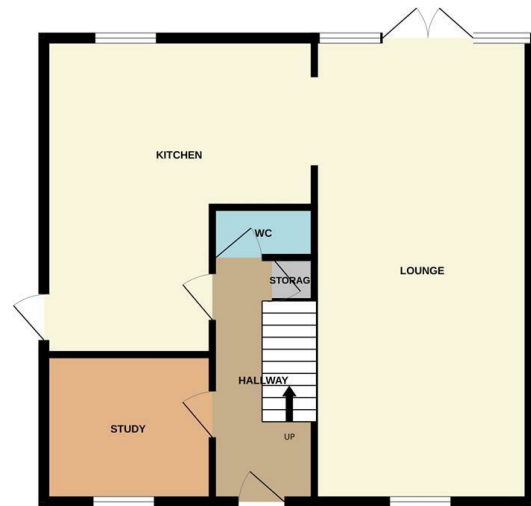
Two power sockets and the drive which is ample for multiple vehicles.



GROUND FLOOR



1ST FLOOR



Whilst every attempt has been made to ensure the accuracy of the floorplan contained here, measurements of doors, windows, rooms and any other items are approximate and no responsibility is taken for any error, omission or mis-statement. This plan is for illustrative purposes only and should be used as such by any prospective purchaser. The services, systems and appliances shown have not been tested and no guarantee as to their operability or efficiency can be given.  
Made with Metropix ©2023

**Consumer Protection from Unfair Trading Regulations 2008.**

S J Warren has not tested any apparatus, equipment, fixtures and fittings or services and so cannot verify that they are in working order or fit for the purpose. A Buyer is advised to obtain verification from their Solicitor or Surveyor. References to the Tenure of a Property are based on information supplied by the Seller. The Agent has not had sight of the title documents. A Buyer is advised to obtain verification from their Solicitor. Items shown in photographs are NOT included unless specifically mentioned within the sales particulars. They may however be available by separate negotiation. Buyers must check the availability of any property and make an appointment to view before embarking on any journey to see a property.

Energy Efficiency Rating		Current	Potential
Very energy efficient - lower running costs			
(92 plus) A			82
(81-91) B			
(69-80) C		70	
(55-68) D			
(39-54) E			
(21-38) F			
(1-20) G			
Not energy efficient - higher running costs			
England & Wales		EU Directive 2002/91/EC	

Environmental Impact (CO <sub>2</sub> ) Rating		Current	Potential
Very environmentally friendly - lower CO <sub>2</sub> emissions			
(92 plus) A			
(81-91) B			
(69-80) C			
(55-68) D			
(39-54) E			
(21-38) F			
(1-20) G			
Not environmentally friendly - higher CO <sub>2</sub> emissions			
England & Wales		EU Directive 2002/91/EC	

Seaway, Southminster CM0 7ND  
£395,000

To view this property call  
01621 734300

**S J WARREN**  
www.sjwarren.co.uk

