

**SJ**  
WARREN

# DENGIE MANOR



# Summary

A Historic Grade II Listed Family Home of Rare Distinction- available for the first time in more than 40 years.

Set in the heart of Essex's unspoilt Dengie Peninsula, Dengie Manor is a Grade II listed country house of exceptional charm, provenance, and character.

Surrounded by approximately 2.75 acres of private gardens and grounds, it offers a rare blend of period grandeur and modern family living.

The house dates back to the early 1600s, with its origins still visible in the rear structure. In the mid 18th century, the property was elegantly re-fronted, giving it the striking Georgian façade it retains today, with symmetrical sash windows, dormers, and classical proportions. Over time, the Manor has been sympathetically modernised, creating a home that is both historically rich and perfectly suited to 21<sup>st</sup> century life.

Dengie Manor was the seat of the Fanshawe family for over 300 years — a prominent lineage with deep ties to the county and national public life. Their long custodianship has given the house a sense of continuity and dignity that is still felt today.

The accommodation includes generous and well balanced reception rooms, including a grand hallway and staircase, elegant drawing and dining rooms with bay windows overlooking the gardens, and a beautifully panelled music room with oak walls and a carved fireplace. A conservatory leads to a central courtyard and family kitchen, with further utility areas and a cellar.

A separate guest wing offers a high-spec kitchen, lounge, and two bedrooms. Upstairs, the main house includes a principal suite, family bathroom, and up to six further bedrooms.

The house is believed to have hosted Richard Strauss, who composed music here — a unique cultural note in its rich and layered history.

This is a truly extraordinary opportunity to acquire one of Essex's most important and historic private homes — rarely available, deeply rooted in English heritage, and offering exceptional potential as a landmark family estate

GUIDE PRICE  
**£1,750,000**

# Key features

- 8 Bedroom - Grade II Listed Historic Manor –  
A significant and beautifully preserved country house with origins dating back to the early 1600s.
- Once owned by one of Essex's most prominent families for over 300 years, rich in heritage and continuity.
  - Extensive Family Accommodation – Includes up to eight bedrooms, multiple reception rooms, a panelled music room, and separate guest wing with kitchen and lounge.
- Approx. 2.75 Acres of Grounds with wonderful mature trees many of which are hundreds of years old.
  - Impressive Outbuildings – Including garage block, cart lodge, coachman's quarters.
- A Once-in-a-Generation Opportunity – A landmark country home rarely available on the open market — one of Essex's most important private residences.
  - Outstanding views over the River Crouch and as far as the River Thames and Kent.
    - Very Large Cellar.
  - 3 Miles from train station with direct trains to London Liverpool Street.
  - Kitchen garden with an established orchard.

## PROPERTY TYPE



House - Detached

## BEDROOMS



8 - Eight

## BATHROOMS



5 - Five

## SIZE



5383 ft<sup>2</sup>

## TENURE

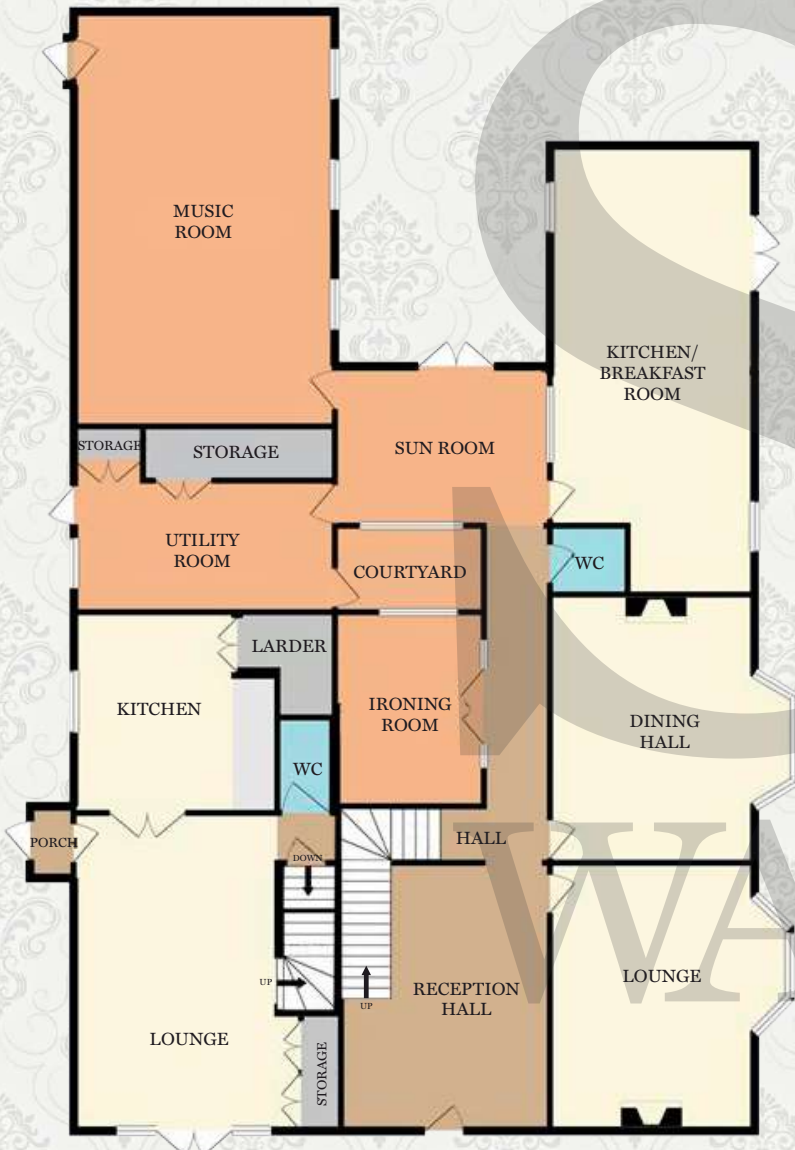


Freehold

# Floor Plans

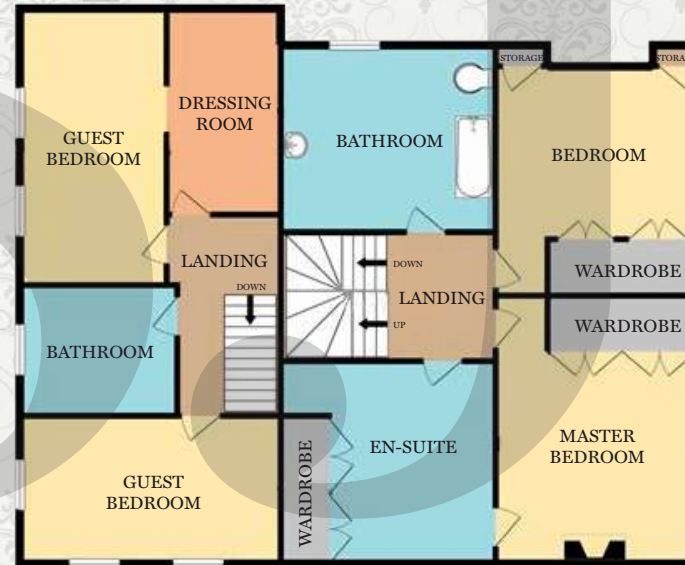
## GROUND FLOOR

2850 ft<sup>2</sup> (264.8 m<sup>2</sup>) approx.



## 1<sup>ST</sup> FLOOR

1534 ft<sup>2</sup> (142.5 m<sup>2</sup>) approx.



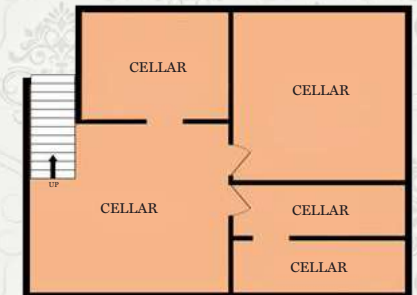
## 2<sup>ND</sup> FLOOR

452 ft<sup>2</sup> (42.0 m<sup>2</sup>) approx.



## BASEMENT

547 ft<sup>2</sup> (50.8 m<sup>2</sup>) approx.

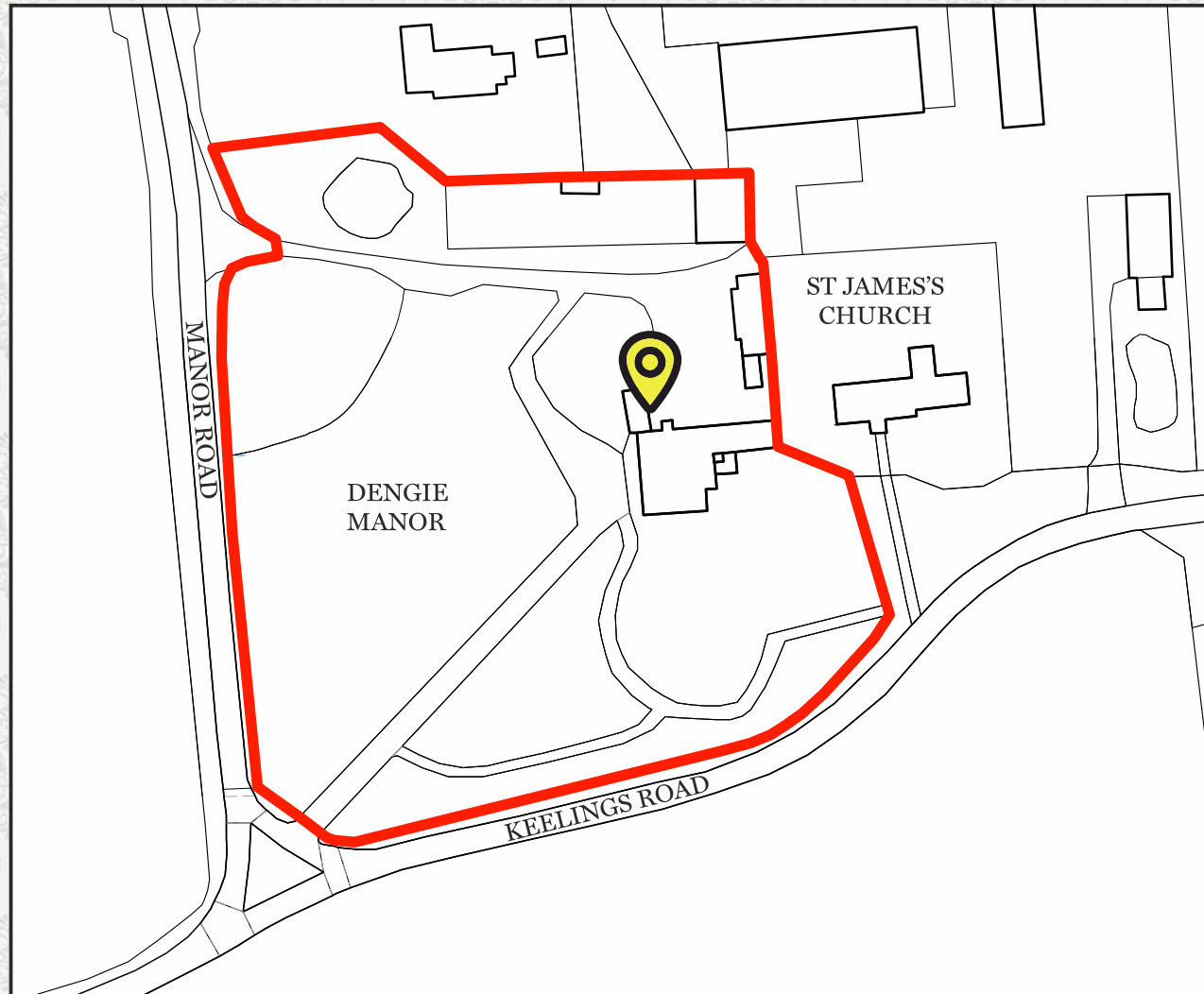



## GROSS INTERNAL AREA

5383 ft<sup>2</sup> (500.1 m<sup>2</sup>) approx.

# Location

 - Dengie Manor, Manor Road, Dengie, CM0 7UH



 - **SITE BOUNDARIES**  
2.75 acres (11171.91 m<sup>2</sup>) approx.



















**SJ**  
WARREN  
**FOR SALE**  
01621 734 300

































































































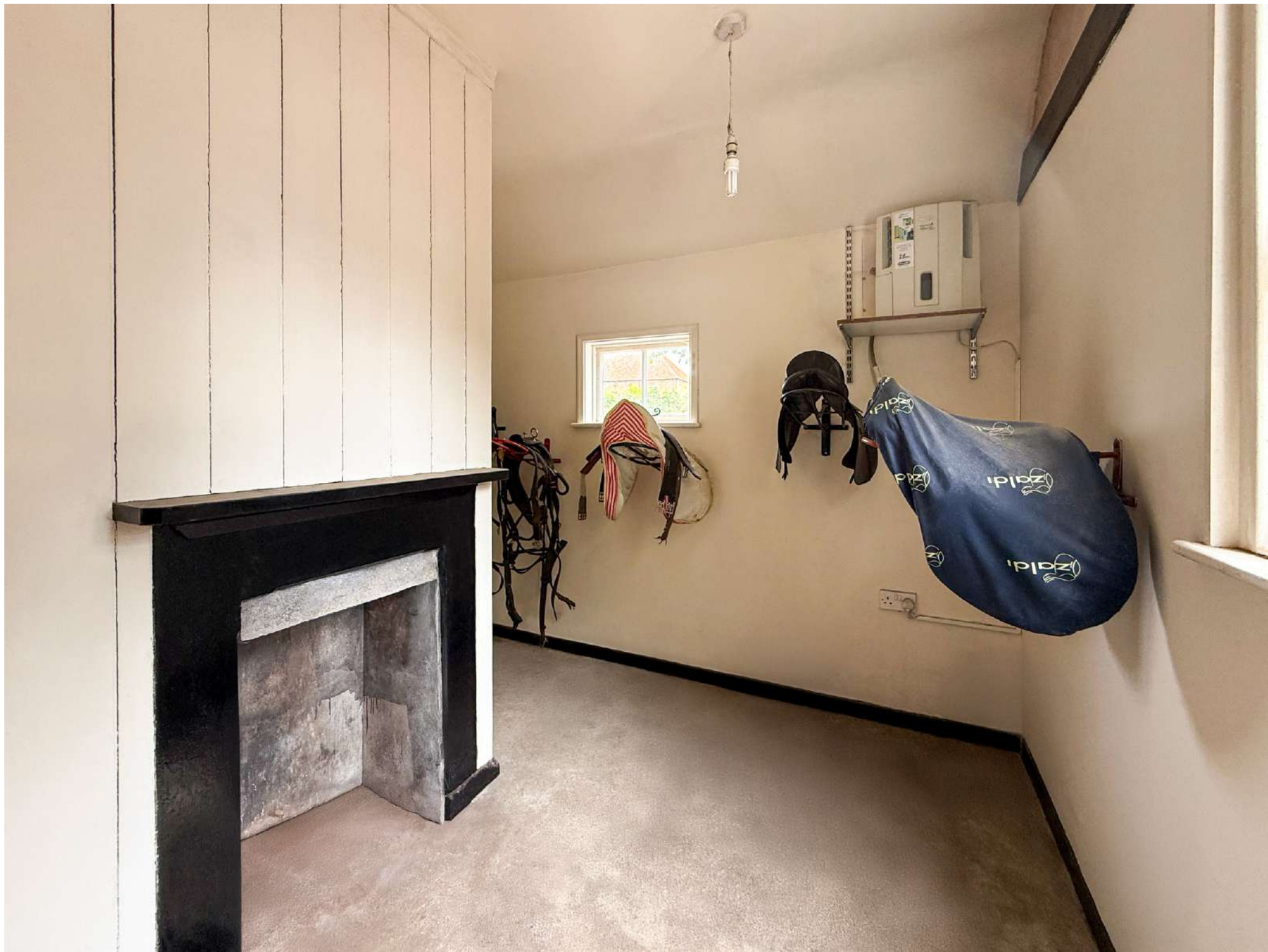














SOUTHMINSTER  
ASHELDHAM

BRADWELL-ON-  
TILLINGHAM  
DENGIE

THE MARSHES







**SJ**  
WARREN



Images are for marketing and illustrative purposes only.

The property is sold as seen and does not include any furniture, fixtures,  
or fittings unless expressly agreed in writing.

Actual appearance, layout, and contents may differ from those shown

 01621 734 300

 [info@sjwarren.co.uk](mailto:info@sjwarren.co.uk)

 [www.sjwarren.co.uk](http://www.sjwarren.co.uk)

 164 Station Road, Burnham-on-Crouch, CM0 8HJ