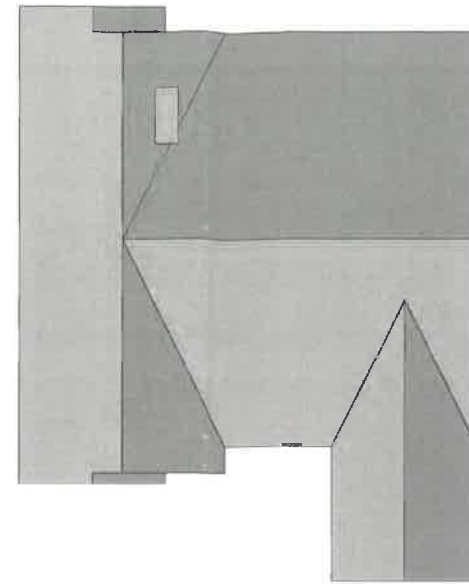
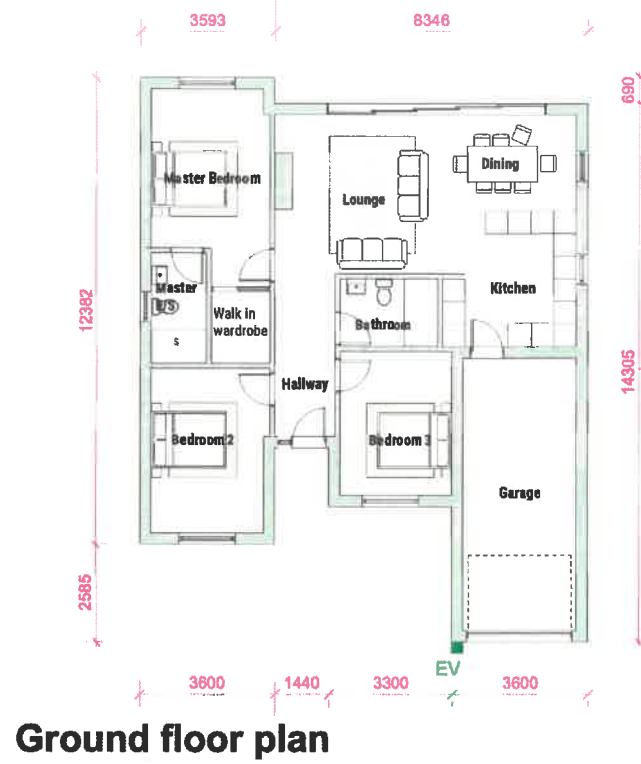
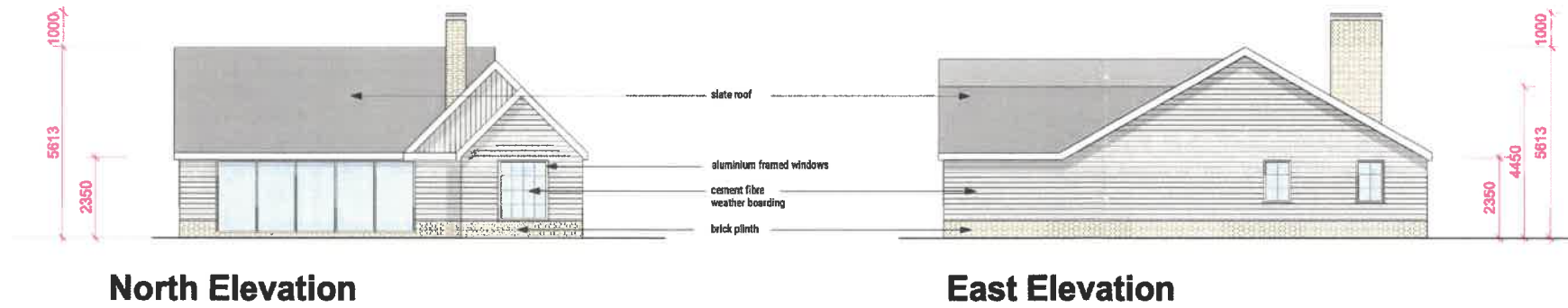


Unit 2 Floor Area
 Ground Floor 145sqm
 TOTAL 145sqm

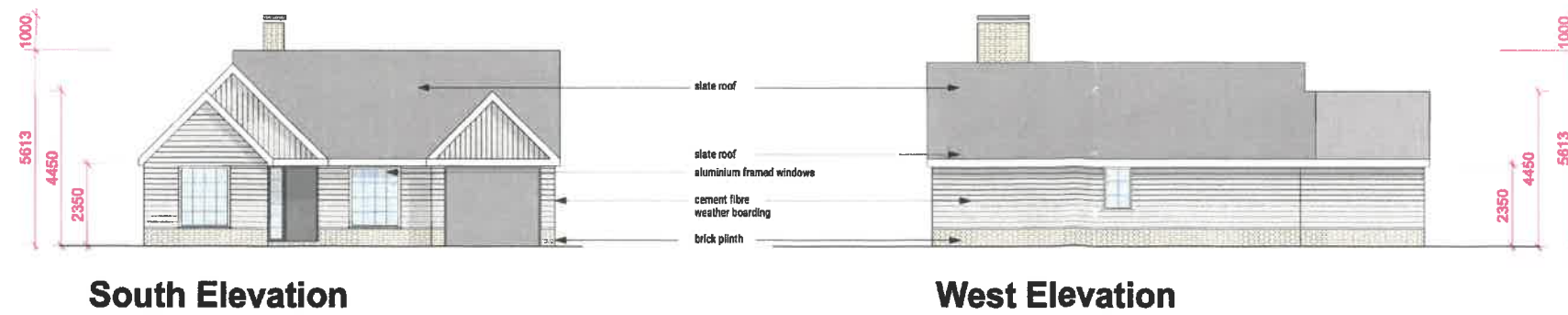
Unit 4 Floor Area
 Ground Floor 145sqm
 TOTAL 145sqm



St. Ives Cream Rustica brick to plinth and chimney



Light Mist ■ ●
 Hardie Plank composite weatherboard Plot 2, Blackberry's



Soft Green ■
 Hardie Plank composite weatherboard Plot 4, Bluebells

Blackberry's, Bluebells, The Paddock, North Fambridge, Essex